



CHULA VISTA RESORT

Weddings

RENTAL ITEMS

Add an extra special touch to your wedding or special event with our rental decor items.
If you don't see what you have been dreaming of, let us know – we love to create!

For prices and any other inquiries, contact our wedding coordinator at **608-253-0697**

TABLE DÉCOR

GOLD CHARGERS

\$2 each



SILVER CHARGERS

\$2 each



CANDLES



MIRROR TILE AND VOTIVE CANDLES

12" Mirror Tiles and Small Glass Votive Candles. Both items are included with the rental of any of our reception spaces if you choose to use them.

One mirror tile and 3 votives per table.

CHAIRS & LARGE FURNITURE ITEMS

CHAIR COVERS

White Spandex Chair Covers
\$4 each



CHIAVARI CHAIRS

Gold Chiavari Chairs
\$5 each



WHISKY BARRELS

4 Available
\$30 each



FLOWER WALL

7' x 8'
1 Available
\$250 each



BOXWOOD WALL

7' x 8'
1 Available
\$250 each



CHAMPAGNE GREENERY WALL

7' x 8'
1 Available
\$300 + Cost of Champagne



ARCHES

We recommend reserving arches as early as possible as there is only one available for each style. Arch draping is not included.

MODERN ARCH

\$200



GEOMETRIC ARCH

\$200



PERGOLA ARCH

In Dark Stain
\$200



CAFÉ LIGHTS

Café Lights are available in all ballrooms. Ask your Wedding Coordinator for an estimate.

*For safety reasons, only Chula Vista-owned Café Lights may be used, and lights must be hung by Chula Vista staff.

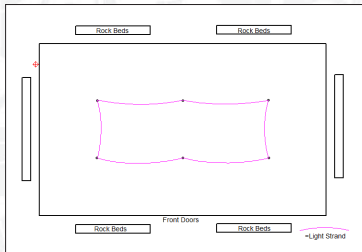


View Café Light layouts on the next page.

CAFÉ LIGHTS LAYOUTS

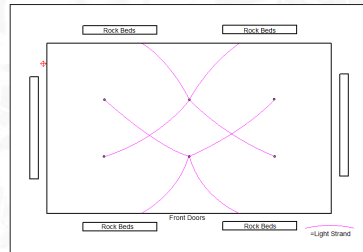
TENT LAYOUT 1

\$750



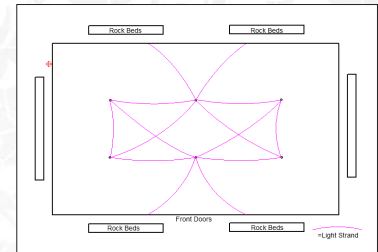
TENT LAYOUT 2

\$950



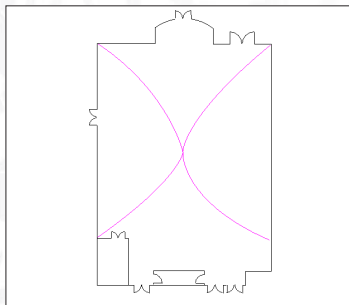
TENT LAYOUT 3

\$1100



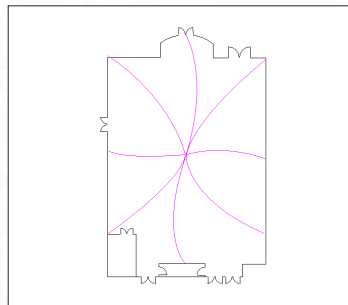
GRAND LAYOUT 1

\$750



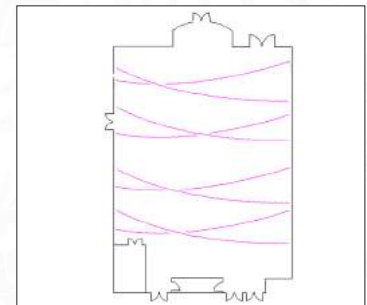
GRAND LAYOUT 2

\$950



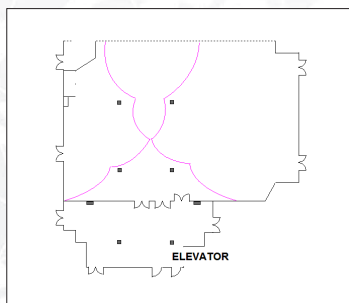
GRAND LAYOUT 3

\$950



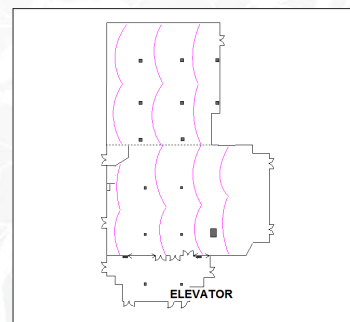
RIVERVIEW NORTH 1

\$950



RIVERVIEW NORTH & SOUTH

\$1100



WALL DRAPING

GRAND BALLROOM DRAPING

Perimeter Draping – \$1500



Individual Wall Draping – \$350



Door Draping – \$100



RIVERVIEW NORTH DRAPING

Movable Wall Draping – \$600



**Add Pillar Draping – \$650 for all 4 pillars*